

Sept 2024

# TRACTOR TIMES

MVATP  
EDGE&TA  
Branch 38

*“We’re Pulling for You”*

,SEPTEMBER MEETING AT 7:30PM - DINNER AT 7PM at MOUNTAINVIEW BARN



## Twin Falls County Fair Pull

We capped off the main pull season on Labor Day with the Twin Falls County Fair featuring both a tractor pull and display. Thanks to all who came out and manned the booth! We were able to have a People’s Choice Award contest allowing the public to vote for their favorite display items. Thanks to all who brought tractors, implements, and other Antique Ag pieces to show! Congrats to Boyd Harms. His Oliver 60 with a Gehl Single Row Corn Header won the People’s Choice Award only beating out Harry Sanders’ Ford 8N with box scraper by a single vote!



*Pull Videos on YouTube*

The pull was also a success even with some finicky weather. The thundershowers stayed north, and the sun stayed (mostly) behind the clouds making for favorable weather. with over 20 hooks! Huge thanks to the Martins for stepping up and taking over Pull Chair duties and congratulations on completing your first pull!



EDGE & TA National  
<https://edgeta.com/>



MVATP Branch 38

Online at:

<https://www.magicvalleyantiquetractorpullers.com>

Email: [MVAntiqueTractorPullers@gmail.com](mailto:MVAntiqueTractorPullers@gmail.com)

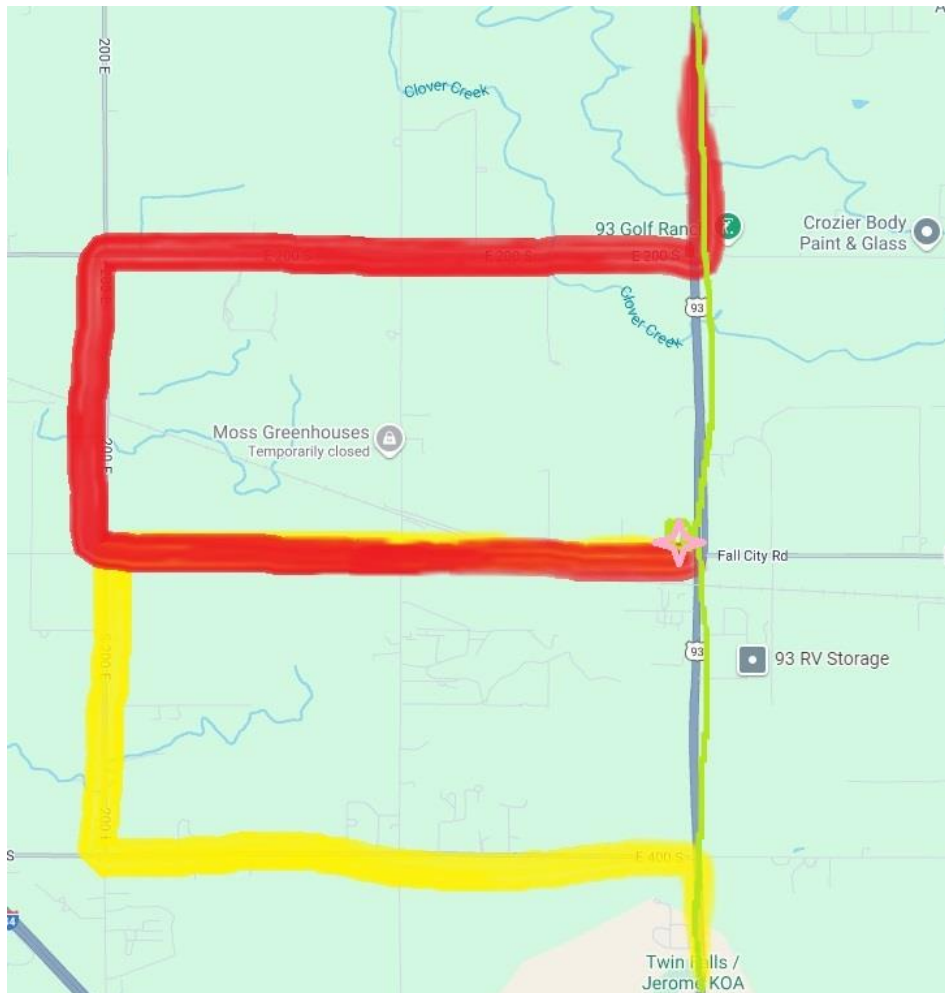
## Tractors For Sale

Several visitors to the booth asked us to help them advertise Tractors for Sale. We don't have all the details on each piece but did take down a brief description and contact info. Reach out to them if something strikes your fancy.

- Allis Chalmers B w/loader – Loren Holloway, 2100E 4333N, Filer – 208-308-9474
- Older lawnmower, purchased in 1973 from City of Twin Falls – Cliff Bean, 208-751-1998
- Massey Harrison 11?? – M?? Tucker, 208-326-5518
- JD 50 – Dave Sybesma, 208-280-1179

*Fundraiser Dinner & Banquet is fast approaching! (See Insert) This year it will be held November 2<sup>nd</sup>.*

*Time to start thinking about making or getting donations. If you need a letter stating, we are a non-profit, please reach out to Janet Bolich.*



## Alternate Routes to the Barn

With ongoing construction on Hwy 93 here are some alternative routes to access Mtn View Barn.

### Hwy 93 southbound: (red)

Turn right (west) onto 200S Rd. Take a left (south) onto 200E Rd then another left (east) onto 300S/Fall City Rd. Driveway will be on your left as you approach Hwy 93.

### Hwy 93 northbound: (yellow)

Turn left (west) onto 400S Rd. Take a right (north) onto 200E Rd then another right (east) onto 300S/Fall City Rd. Driveway will be on your left as you approach Hwy 93.

**Regular Route** but instead of turning onto 300s/Fall City Road turn at the northeast corner of Barn Property at the big cottonwoods there is a temporary access road

## Pull Results: Twin Falls County Fair 2024

### SMALL SLED

Driver/Owner	Town	Year	Make/Model	Weight	HP	Fuel	Distance
<b>2000-3000#</b>							
Clint Robbins	Jackson	1938	AC Model B	2,100	13	gas	48.1
<b>Nick McKay</b>	<b>Jerome</b>	<b>1941</b>	<b>Farmall A</b>	<b>2,400</b>	<b>12</b>	<b>gas</b>	<b>126.0</b>
Jim Grisenti	Rupert	1947	Farmall BN	2,540	16	gas	123.9
Russ Martin	Jerome	1948	Farmall Super A	2,990	18	gas	108.6
Jack Duchow	Twin Falls	1953	John Deere M	2,574	20	gas	64.5
Kevin Duchow	Twin Falls	1953	John Deere M	2,634	20	gas	70.9
<b>3000-4000#</b>							
<b>Terry Bivens</b>	<b>Jerome</b>	<b>1949</b>	<b>CO-OP E3</b>	<b>4,000</b>	<b>32</b>	<b>gas</b>	<b>180.0</b>
Rob Kohntopp	Filer	1954	Oliver Super 66	3,990	28	gas	161.9
Jack Duchow	Twin Falls	1953	Farmall Super C	3,520	23	gas	107.2
Kevin Duchow	Twin Falls	1953	Farmall Super C	3,600	23	gas	88.1
Alyssa McCaughey	Jerome	1948	IH 404	3,670	36	gas	138.4
<b>4000-5000#</b>							
<b>Rodney Bolich</b>	<b>Jerome</b>	<b>1945</b>	<b>Farmall H</b>	<b>4800</b>	<b>28</b>	<b>gas</b>	<b>132.6</b>
Darrin McCaughey	Jerome	1953	Farmall Super H	4890	40	gas	125.4
<b>5000-6000#</b>							
Paul Borges	Kimberly	1947	Case Model D	5240	33	gas	138.5
Rex Shaw	Kimberly	1952	Minneapolis Moline U	6000	42	gas	189.1
Rob Kohntopp	Filer	1955	Oliver Super 77	5400	37	gas	152.4
Mike Edlund	Richfield	1950	Massey Harris 44	5980	30	gas	205.6
Rodney Bolich	Jerome	1954	John Deere B	5140	28	gas	134.0
Terry Bivens	Jerome	1952	Farmall Super M	6000	44	gas	206.8
<b>Boyd Harms</b>	<b>Wendell</b>	<b>1935</b>	<b>Oliver Hart Parr</b>	<b>6000</b>	<b>44</b>	<b>gas</b>	<b>215.1</b>
Lawrence Burch	Burley	1956	John Deere 70	5600	45	gas	176.3

### LARGE SLED

Driver/Owner	Town	Year	Make/Model	Weight	HP	Fuel	Distance
<b>8000-9000#</b>							
Tristen Daniels	Twin Falls	1956	Case 400 D	8,870	50	dsl	66.0
<b>Boyd Harms</b>	<b>Wendell</b>	<b>1968</b>	<b>Oliver 1750 D</b>	<b>9,000</b>	<b>80</b>	<b>dsl</b>	<b>97.6</b>
<b>9000-10000#</b>							
Delbert Harmon	Buhl	1958	John Deere 720 D	9,900	56	dsl	77.4
<b>10000-11000#</b>							
Boyd Harms	Wendell	1957	Oliver Super99 EMD	11,000	75	dsl	88.2

## Lawn & Garden Pull Results: Twin Falls County Fair 2024

### LAWN & GARDEN

Driver/Owner	Town	Year	Make/Model	Weight	HP	Fuel	Distance
<b>YOUTH</b>							
<b>Ember McKay</b>	<b>Jerome</b>	<b>1967</b>	<b>Sears Suburban</b>	<b>960</b>	<b>12</b>	<b>gas</b>	<b>79.8</b>
Henry Martin	Jerome	1965	AC Big 10	960	10	gas	72.0
Kayden McCaughey	Jerome	?	Ford 80	440	12	gas	25.4
Taylor McCaughey	Jerome	?	Ford 80	440	12	gas	18.0
Dawson McCaughey	Jerome	?	Ford 80	440	12	gas	10.0
<b>Under 1050#</b>							
<b>Nick McKay</b>	<b>Jerome</b>	<b>1967</b>	<b>IH Cub Cadet</b>	<b>980</b>	<b>7</b>	<b>gas</b>	<b>103.0</b>
Nicki McKay	Jerome	1965	AC Big 10	980	10	gas	91.9
<b>Turf Tires</b>							
<b>Terry Bivens</b>	<b>Jerome</b>	<b>2006</b>	<b>Craftsman YS 4500</b>	<b>880</b>	<b>22</b>	<b>gas</b>	<b>42.4</b>
<b>Over 1050# (Exhibition)</b>							
Nick McKay	Jerome	1961	IH Cub Cadet	1100	7	gas	93.1
<b>Russ Martin</b>	<b>Jerome</b>	<b>1962</b>	<b>IH Cub Cadet</b>	<b>1200</b>	<b>7</b>	<b>gas</b>	<b>126.6</b>

Make	Model	Year	Serial #	Description/Location/Notes
John Deere	AO (orchard)	1941	261389	Arco, ID
John Deere	A (ANH)	1948	618383	High Crop, single front wheel (Bob Neuman)
John Deere	A	1949	604609	Warren's w/farmhand loader
John Deere	G	1950	40955	Smith, Kasota area
IHC/Farmall	Regular	1927	T50273	Malta, Idaho w/loader
IHC/Farmall	F14		F514362	South of Burley
Oliver	70	1944	245690	Albion, ID
Oliver	770	1951	D56342612	Warren's

### Tractors for Sale

Contact:  
 Mike Taylor  
 188 S Crystal Dr  
 Rupert, ID 83350  
 208-436-5897 (hm)  
 208-312-4297 (cell)  
[MDTaylor@pmt.org](mailto:MDTaylor@pmt.org)

### Board Members/Officers Needed

It's that time again. We need a Nominating Committee to look for officers and board members for the upcoming year. Rod Bolich and Rodney Schmitt have offered to be on the nominating committee. We need one more volunteer for the nominating committee. Contact Kevin Duchow if you can help.

Janet Bolich is resigning as Secretary. Cassie Duchow is willing to take on that position if someone wants to take on the Vice-President role, with the understanding that she cannot attend meetings April-August due to 4H and would need someone to take notes on her behalf. We will also need to fill 2 board at large positions.



## Magic Valley Antique Tractor Pullers, Inc.

Branch #38 of EDGE&TA  
Get your donated items ready to sell!

### Annual Harvest Dinner Party & Auction

**Saturday, November 02, 2024**

**Mt. View Barn**

**392 E 300 S, Jerome, ID 83338**

Sirloin Steak, Roast Turkey & dressing, mashed potato with gravy, vegetable, salad, roll & salted caramel apple cake

Registration & No Host Bar 5-6 PM, ~ Meal 6:15PM

**\$35.00 per member, 10 & Under Free**

Payment at door or in advance

Mail to Sandy Shaw, 137 Fafnir Dr, Kimberly, ID 83341

**RSVP by Tuesday October 28, 2024**

Janet Bolich, 208-539-7220

Sandy Shaw, 208-423-4920

If no answer leave a message with your name & phone number.

Number of people attending



Magic Valley Antique Tractor Pullers  
c/o Cassie Duchow  
3682 N 2500 E  
Twin Falls, Idaho 83301



9/26 SEPT MTG, DINNER 7PM, MTG 7:30PM, MTNVIEW BARN  
10/5 - FUN DAY & FALL I-FARM CLEAN-UP (TBD)