

Aug 2025

TRACTOR TIMES

MVATP
EDGE&TA
Branch 38

"We're Pulling for You"

DATE CHANGE FOR AUGUST MEETING

Our Monthly Club Meeting is being moved from its traditional 4th Thursday to the 3rd Thursday for August. Our normal Thursday is the middle of the Twin Falls County Fair and many members will be helping with our static display during this week. Therefore, our meeting will be **August 21st at 7 pm**. The meeting will be held at the Mountainview Barn in Jerome. No meal will be served. We will be discussing the upcoming Twin Falls County Fair Display & Pull. We will be doing our People's Choice Award again this year. All members planning to pull are encouraged to include their tractors in the display. However, you don't have to pull to include items in the display. We will parade tractors down to the Pull on Monday Morning.



Figure 1 Terry Bivens pulling his Farmall M at the Minidoka Co Fair Pull Saturday, August 2nd, 2025. There was an excellent turnout and participation for this event as usual. Thanks to the Minidoka Co Fair Board for having us out for this event.

Pulling at Twin Falls?

Pull sheets for the Twin Falls County Fair Pull can be turned in to Sandy Shaw. Mailing address 137 Fafnir, Kimberly, Idaho 83341 or email kimweld@hotmail.com

You can bring your signed pull sheet day of but let Sandy know what you're bringing so she can get you on the pull sheet beforehand!



EDGE & TA National
<https://edgeta.com/>



MVATP Branch 38

Online at:

<https://www.magicvalleyantiquetractorpullers.com>

Email: MVAntiqueTractorPullers@gmail.com

JEROME COUNTY FAIR PULL RESULTS

June 25th, 2025 - I-FARM

SMALL SLED

Class	Driver/Owner	Town	Year	Make/Model	Weight	H P	Fuel	Dist.
2000-2600#								
	Mark Applewhite	Jerome	1947	Allis Chalmers B	2,350	20	gas	127.11
WIN	Nick McKay	Jerome	1941	Farmall A	2,400	12	gas	156.11
2601-3500#								
	Jack Duchow	Twin Falls	1949	John Deere M	2,680	23	gas	143.1
WIN	Kevin Duchow	Twin Falls	1949	John Deere M	2,800	23	gas	150.9
	Russ Martin	Jerome	1948	Farmall Super A	2,990	17	gas	142
	Boyd Harms	Wendell	1960	Oliver 440	3,000	25	gas	92.9
	Rodney Schmitt	Heyburn	1950	Farmall C	3,360		gas	105.2
3500-4000#								
WIN	Rob Kohntopp	Filer	1954	Oliver Supper 66	3,993	28	gas	126
4000-4500#								
WIN	Alyssa McCaughy	Jerome	1948	International 404	4,126	40	gas	119.2
4,501-5,000#								
	Rodney Bolich	Jerome	1945	Farmall H	4,800	28	gas	129.1
WIN	Darrin McCaughy	Jerome	1955	Farmall M	4,800	40	gas	168.8
	Johnathon Bateman	Burley	1944	Farmall M	4,935	36	gas	91.11
	Kade Bateman	Burley	1944	Farmall M	4,945	36	gas	106.1
	Jeff Mecham	Jerome	1950	Oliver 77	4,960		gas	131.5
ADD WATER 5,000-5,400#								
WIN	Paul Borges	Kimberly	1947	Case D	5,240		gas	140.1
	Rodney Bolich	Jerome	1954	John Deere 50	5,140	28		119.8
5,401-6,000#								
WIN	Rob Kohntopp	Filer	1955	Oliver Super	5,400	37	gas	155.8
	Ryan DeWolfe	Gooding	1954	Farmall Super M	5,400	45	gas	153.7
Exhibition 5500#								
	Mike Edlund	Richfield	1950	Modified Farm M V8	5,500	100	gas	128.2
	Boyd Harms	Wendell	1958	Mod Oliver 770	5,500		gas	135.5
WIN	Curtis Fisk	Paul	1948	Farmall H Modifi	5,500			179.2
BIG SLED 6000-6500#								
	Boyd Harms	Wendell	1935	Oliver Hard Par	6,000	44	gas	186.8
	Mike Edlund	Richfield	1950	Massey Marris	6,000	30	gas	217.9
	Jeff Mecham	Jerome	1956	Cockshut R40	6,480	43	gas	150.6
	Ryan DeWolfe	Gooding		Farmall M				176.6
WIN	Curtis Fisk	Paul	1956	Case 400	7,000	80	gas	179.2
8001-9000#								
WIN	Warren Jackey	Jerome	1952	John Deere R	8,820	49	diesel	200
Exhibitions								
WIN	Curtis Fisk	Paul	1956	Case 400	9,000	80	diesel	242.2
10000-11000#								
WIN	Gerhardt Harms	Wendell	1957	Oliver Super 99 GM	11,000	75	diesel	312.70
	Robert Heath	Eden	1959	John Deere 830	11,180	80	diesel	269.70
12,000#								
WIN	Boyd Harms	Wendell	1966	Oliver 195D	12,000	##	diesel	344.40

JEROME COUNTY FAIR PULL RESULTS - Continued

June 25th, 2025 - I-FARM

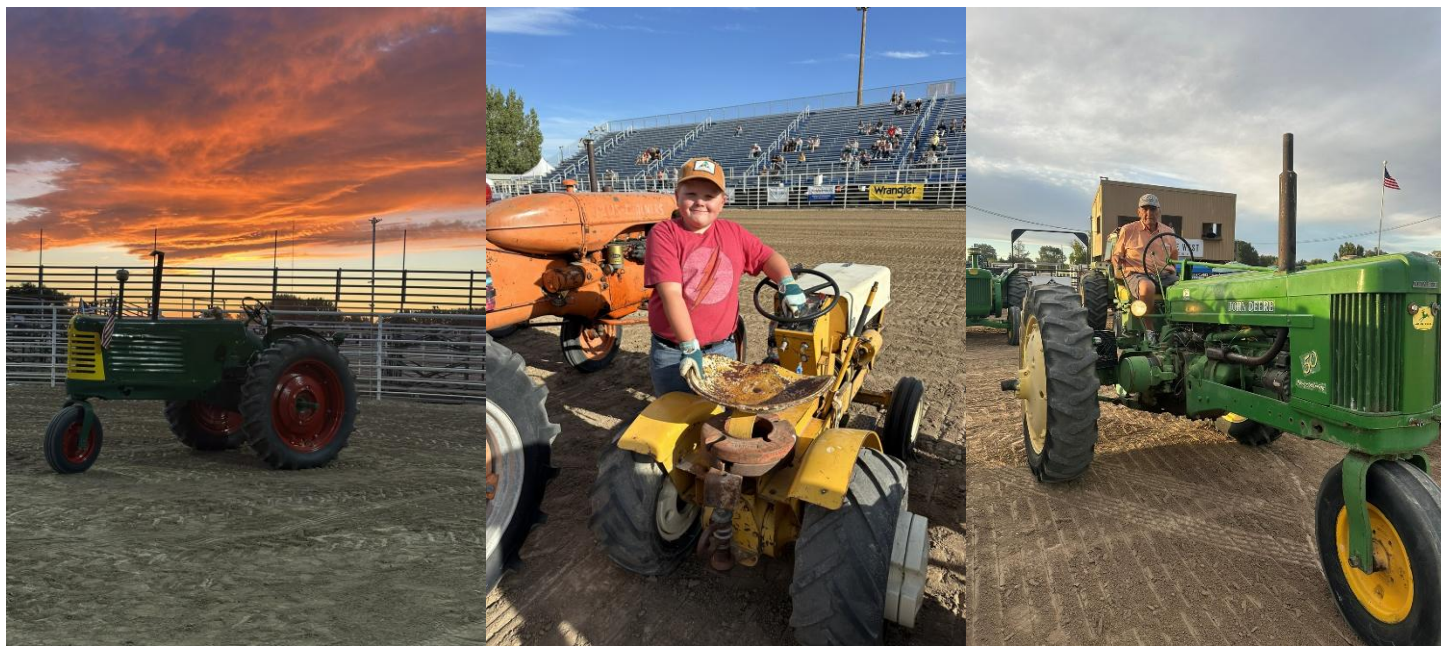
Lawn & Garden

YOUTH

Class	Driver/Owner	Town	Year	Make/Model	Weight	H P	Fuel	Distance
WIN	Taylor McCaughy	Jerome		Ford 80	440	12	gas	108.7
	Baxley Allred	Jerome	1970	Int Cub Cadet	1000	12	gas	116.1
WIN	Ember McKay	Jerome	1967	Sears Suburban 12	960	12	gas	177.7

ADULTS

	<i>Driver/Owner</i>	<i>Town</i>	<i>Year</i>	<i>Make/Model</i>	<i>Weight</i>	<i>H P</i>	<i>Fuel</i>	
WIN	Matthew Human	Kimberly	1982	Wheel Horse GT	667	18	gas	75.1
WIN	Niki McKay	Jerome	1965	Allis Chalmers Big 10	840	10	gas	116.7
WIN	Nick McKay	Jerome	1967	Int Cub Cadet	940	7	gas	174.2
	Rodney Schmitt	Heyburn	1962	Alis Chalmers B-1	1,040	9	gas	141.1
	Russ Martin	Jerome	1965	Int Cub Cadet	1,040	12	gas	113.1
	Johnnie Hatfield	Shoshone			1,200	14		117.9
WIN	Nick McKay	Jerome	1961	Cub Cadet	1,100	7	gas	197.2
	Rob Kohntopp	Jerome	1967	Econo Power	1,200	14	gas	129.5
	Russ Martin	Jerome	1962	Cub Cadet Original	1,200	7	gas	128.2



Jerome Co. Fair 2025 - pictures by Janet & Rodney Bolich

**** Results from Minidoka, Shoshone, & Sagebrush Pulls were not in hand at publication time. Look for them in the September Newsletter. ****

Magic Valley Antique Tractor Pullers, Inc.

TWIN FALLS COUNTY FAIR PULL

Zebarth Arena, Filer, ID

Monday, September 1, 2025 – 11 AM (**registration closes at 10:30 am**)

____LAWN & GARDEN

____TRACTOR

Year: _____ Make/Model: _____

HP: _____ Fuel: _____ Weight: _____

Name: _____ Phone: _____

Address: _____ City: _____ State: _____ Zip: _____

Emergency Contact: _____ Phone: _____

Signature needed for minors on Lawn and Garden: _____

Janet Bolich at (208) 539-7220 by August 03, 2025

If you are bringing a tractor to pull, please send this in, or call Sandy, to let them know you are coming, and bring this form with you to the pull. It is needed for insurance.

The requirement to pull is paid membership & this signed document.

Tractors are \$10 per pull

Lawn and Garden it is \$5.00 per pull.

WAIVER OF RESPONSIBILITY: I will not hold the Magic Valley Antique Tractor Pullers, Inc. or its officers or members responsible for any damage or injury to persons or property.

Chair: Russ Martin
823 2n Ave E.
Jerome, ID 83338
(208)421-1628

Co chair: Sandy Shaw
137 Fafnir
Kimberly, ID, 83341
Kimweld@hotmail.com
208-423-4920

TELL US SOMETHING ABOUT YOUR TRACTOR (HISTORY, FACT ABOUT THIS MAKE/MODEL. ETC.), THIS IS FOR OUR ANNOUNCER IN THE BOOTH SO HE HAS SOMETHING TO SHARE WITH THE CROWD!

Magic Valley Antique Tractor Pullers
c/o Cassie Duchow
3682 N 2500 E
Twin Falls, Idaho 83301



**AUG MTG: THURS 8/21 @ MTN VIEW BARN, JEROME/ NO MEAL, 7 PM MTG 7 PM
TWIN FALLS COUNTY FAIR DISPLAY 8/26-9/, SETUP STARTING 8/24
TWIN FALLS CO FAIR PULL - 9/1, 11 AM, ZEBARTH ARENA**